



CASAL
DO CORTICEIRO

VILLAS BY PRESPROP





Surrounded by Nature and fresh air...

In a world that is constantly on the go, stopping, looking around, and simply breathing is more than a privilege, it's a way of life...

Aldeia dos Sobreiros is a residential development where everything has been carefully planned to offer you a wonderful life surrounded by nature and Portugal's warm embrace.

Simple things like opening your window and listening to birds chirping, stepping into the backyard and feeling the breeze between the leaves of your private garden, or taking a dip in the pool while enjoying the warm sun on your skin... every detail is a reminder of how the small things in life can be so very special.

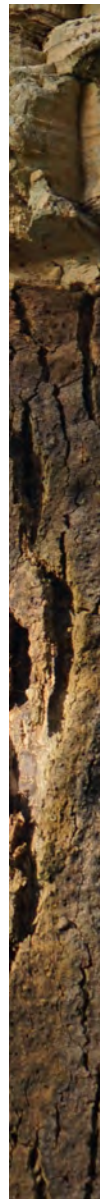
Aldeia dos Sobreiros offers so much and so close! In those moments when you feel like exploring the surroundings, everywhere you turn is an invitation to discover something new: from the countryside, to the forest, passing along the calm riverbank to the wooden walkways that follow the dunes to the nearby beaches.

For those who prefer more secluded paths, there are countless dirt tracks framed by maritime thistles that colour the sea facing cliffs. A perfect spot for walking with your pet amongst ancient windmills or sensing the freshness of the Atlantic and the scent of pine.

Aldeia dos
Sobreiros



Natural cork wall coverings



Inspired by Portuguese traditions...

A country that protects its trees could only welcome with open arms all those who want to grow roots here.

Casal do Corticeiro Villas, in Aldeia dos Sobreiros, are a tribute to Portugal, where land and sea provide us with everything needed for a full life. It is a return to our ancestral origins, where the community was a safe haven from the outside world and our neighbours a welcoming presence in our daily lives.

The design of these modern villas was inspired by the strength of the Portuguese "sobreiro", a protected oak tree which is more than a symbol of Portugal: it is shade, shelter and a way of life thanks to the cork ("cortiça" in Portuguese) which has been extracted sustainably from this majestic oak's bark for centuries.

The same cork that is a distinct element in these homes' unique architecture, in a connection to Portugal and this region's beautiful forests.

Traditional ceramic tiles...

Each villa presents other traditionally Portuguese details such as ceramic outdoor tiles, in a tribute to the history, the land and the people who make Portugal such a special place.



Portuguese stones...

Outdoor pavements in natural limestone "calçada"... sustainable, durable and beautiful.



Spacious interiors that seamlessly connect the indoors to the pool area



2X  2X  1X 



Floor to ceiling windows that let
in natural light and warmth





Architecturally designed for modern living...

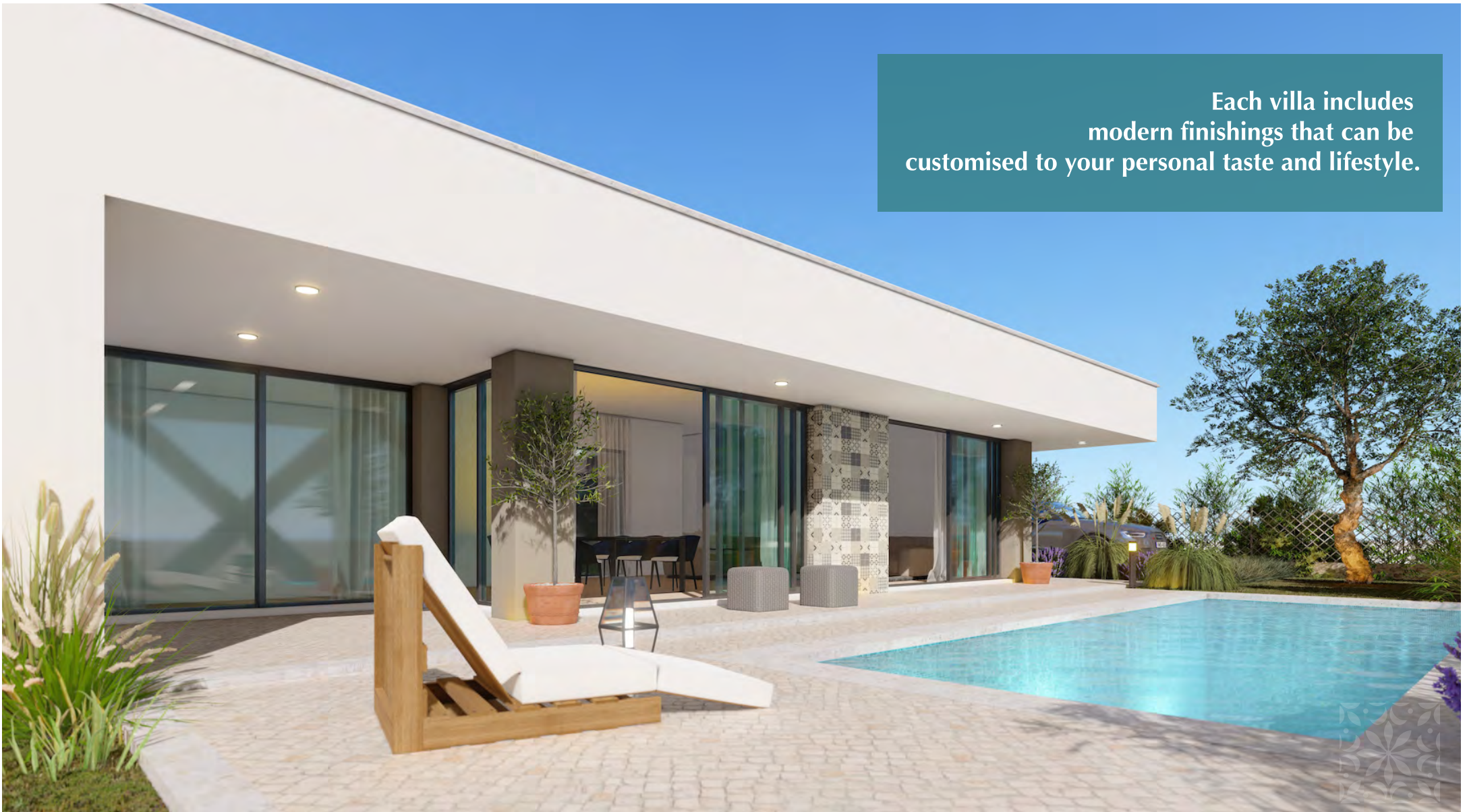
Just as the “sobreiro” grows towards the sky, Casal do Corticeiro Villas were designed to enhance the sense of freedom and space.

With a “clean” and sophisticated architecture, and entirely set on the ground floor, each spacious area of the home seamlessly flows onto the outside, through large floor to ceiling windows that connect the indoors to the enormous plot of land.

The kitchen, dining area and living room benefit from an open-plan design, allowing you to make the most of family life while looking out into the outdoors at all times. The windows of this living area are facing the private pool and garden, creating a peaceful environment to enjoy quality time with family and friends. The two bedrooms also benefit from large windows that let in abundant natural light, creating a warm atmosphere perfect for relaxing.

Each villa has an outdoor parking spot in addition to the plenty of space available right in front of the home, on the private street that gives access to Aldeia dos Sobreiros.

Each villa includes
modern finishings that can be
customised to your personal taste and lifestyle.



Experience the best of the Silver Coast...

These villas are a perfect base for enjoying the Real Portugal, yet close to everything you need for a modern and fulfilling lifestyle.

Surrounded by a lush green landscape and low residential density, Casal do Corticeiro Villas offer a superb location for those who value privacy and tranquillity.

Located in Salir do Porto, in the heart of the Silver Coast of Portugal, the villas are in a tranquil cul-de-sac, just a few minutes walk from Salir do Porto beach and the village centre.



Between the sea and the countryside...

Embraced by Portugal's largest sand dunes, this small fishing village on the south bank of Sao Martinho do Porto Bay was established around an old seaport, where the caravels that allowed Portuguese sailors to discover the world were built in the 16th century. Today, this beautiful beach village is home to a small community, with cafés, restaurants, and quaint traditional shops that are open all year round.

With a wonderful small-town feel, here all the neighbours know each other by name and the family-like atmosphere allows everyone to share a common sense of security and warmth.

Thanks to its central location, Salir do Porto also allows you to travel quickly to anywhere in Portugal. Lisbon Airport, with frequent connections to the whole of Europe and direct international flights, is only an hour away.





An invitation to a wonderful lifestyle...

RESTAURANTS

- Nascer do Sol - 1 min.
- Naco na Pedra - 2 min.
- Porrinhas dos Leitoes - 1 min.
- Churrasqueira do Largo - 3 min.

CAFÉS

- Padaria Cafe Manique - 2 min.
- Café das Piscinas - 3 min.
- Bar das Piscinas - 3 min.
- Pastelaria Dunas - 3 min.
- Do Largo (take-out) - 3 min.

SHOPS & SERVICES

- Graciete Supermarket - 3 min.
- CTT Salir do Porto (post office) - 2 min.
- Cultural and Recreational Centre - 1 min.

POPULAR TOURIST SPOTS

- Salir do Porto beach - 3 min.
- Portugal's biggest sand dunes - 3 min.
- Wooden walkways - 3 min.
- Sao Martinho do Porto bay - 3 min.
- Capela de Sant'Ana - 8 min.
- Miradouro de Salir (lookout point) - 3 min.
- Ruinas da Alfândega - 7 min.
- Hiking trails along the coast - 5 min.
- Salir do Porto swimming pools - 3 min.



Aldeia dos
Sobreiros

BETWEEN THE SEA AND THE COUNTRYSIDE



Largo 28 Maio, 2H | 2460-682 São Martinho do Porto | Portugal

www.presprop.com | info@presprop.com



PROMOTIONAL VIDEO:
www.portugal-construction.com/casal-do-corticeiro